

672 Webb Peak

Edwards, Colorado Cordiera – The Summit

Previously Offered For

\$6,250,000

Live at the top of the Mountain! This gorgeous, one-of-a kind home sits at the top of Webb Peak. Surrounded by beautiful perennial gardens, you'll have an incredible 360-degree view of spectacular high country wilderness.

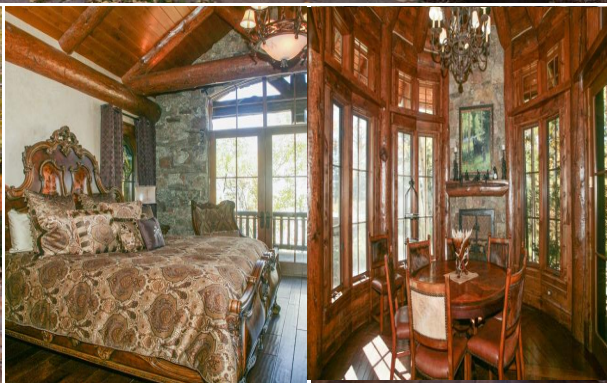
Built in 2004, and sitting on 4.8 acres, this 12,800 square foot home has 6 bedrooms, 6 full baths, and 2 half-baths. Other amenities include a 3-car garage, hot tub, several living areas, amazing vaulted ceilings, and a wine "grotto", making it one of the most unique and grand homes in the Vail Valley.

This home is situated in the private mountain community of Cordiera which extends through thousands of acres of open space, native pine and aspen forests, sprawling meadows and crystal mountain streams, not to mention 4 nearby golf courses. Cordiera is conveniently located and easily reachable by both Denver and Eagle/Vail airports.

Offered to Discriminating Buyers prior to being listed at Auction. No Realtor Fees or Buyer Premiums to pay. High end furnishings available separately.

Accepting Offers prior to April 1, 2020.

More pictures are ready to view at www.jdmi.com/WebbPeakEstate.html



LISTING AGENT

Robert Farrah

405-812-6001

405-943-1414

JDM Investments, Inc.

5100 S. I35 Service Road

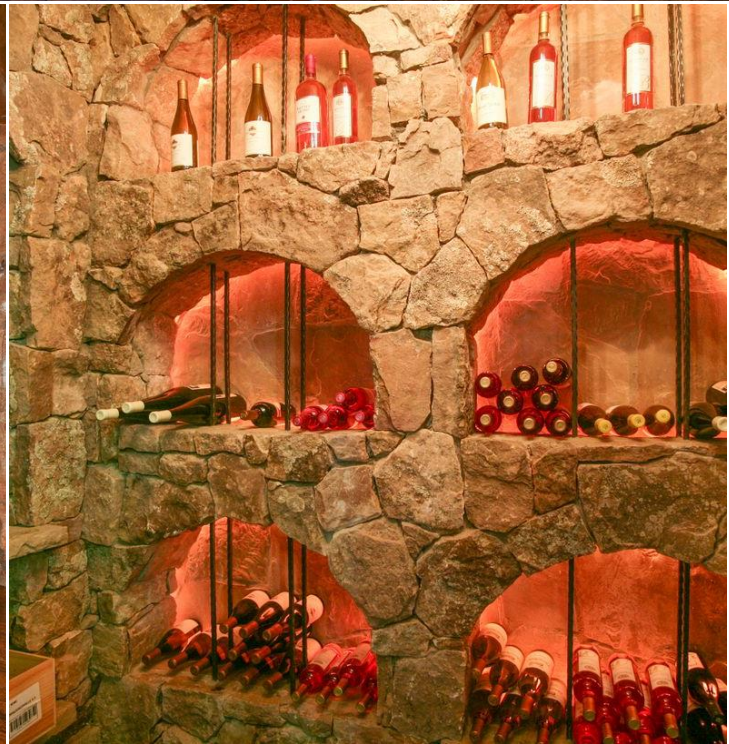
Oklahoma City, OK 73129

www.jdmi.com/WebbPeakEstate.com



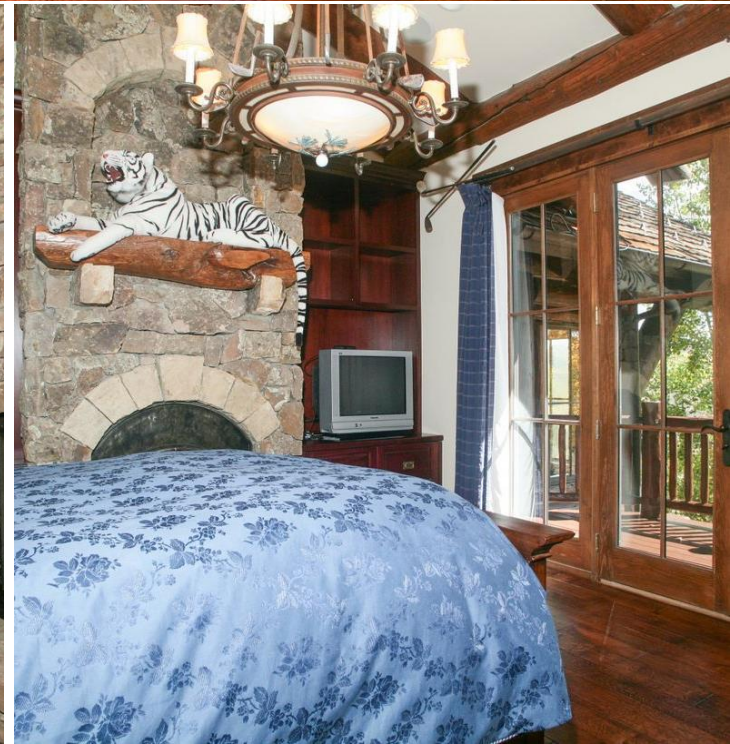
672 Webb Peak

Edwards, Colorado Cordierra – The Summit



672 Webb Peak

Edwards, Colorado Cordierra – The Summit



672 Webb Peak

Edwards, Colorado Cordierra – The Summit

